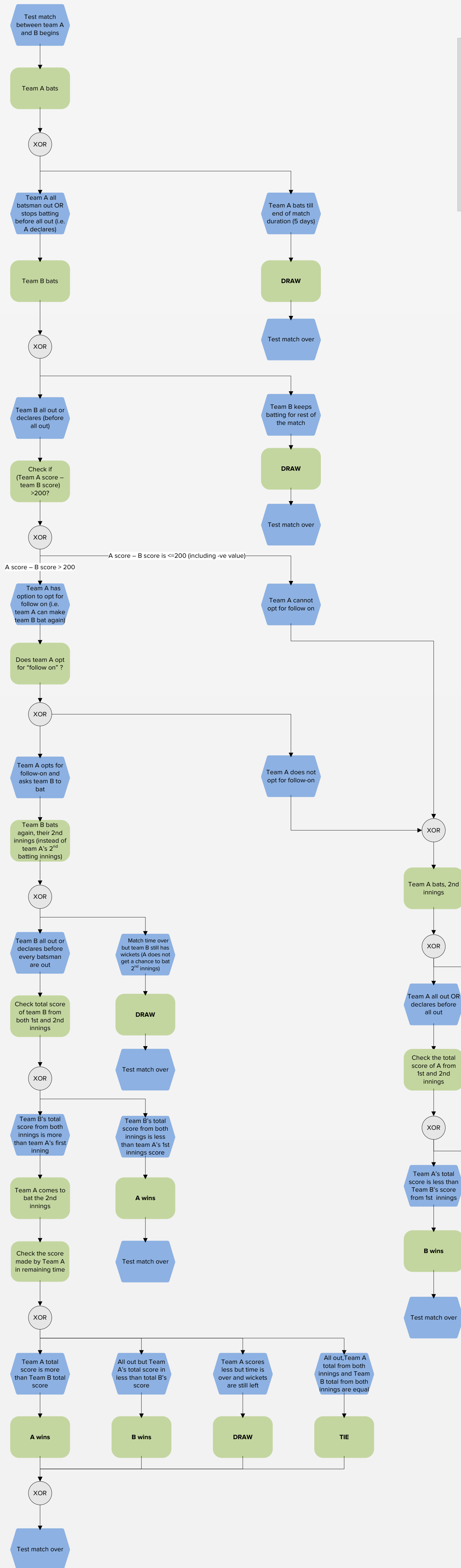


Test cricket explained for beginners via an EPC

By Indrajit Datta Chaudhuri



Note

- EPC stands for event-driven process chain which is a standard process modelling notation.
- This process model is a modest attempt to explain the basics of test cricket for absolute beginners. It does not cater for all situations. There can be many other exception scenarios in test cricket that have not been covered in this model.
- All attempts have been made to follow EPC semantic rules however some event/activity naming is kept descriptive to explain the situation better.
- For detailed rules and regulations please refer to <http://www.icc-cricket.com/about/91/rules-and-regulations/overview>

